



## ATTENTION - PRICE DROP!!!

Prices are rising, ours are falling!!!

Our prices are reduced by 50% now,  
due to warehouse restructuring!!!

## Offer

### Two-pillar Manual Spindle Press Hiller & Lutz HILU HP 70



manufacturer: Hiller & Lutz

type: HILU HP 70

mach.-Nr.: 1047

year of construction: ???

comm.-Nr.: 3990300/009

stock-nr.: 1885

Regular Price: 2.650,- € > **Reduced Price: 1.325,- € BN**

## Technical Data

(According to manufacturer)

**pressure:** ca. 25 t

**spindle diameter:** 70 / 140 mm

**width between columns:** 350 mm

**max. height between table and plunger:** 300 mm

**spindle hub max.:** 220 mm

**table surface (width x depth):** 300 x 300 mm

**pass-through hole in table:** Ø 80 / 120 mm

**mortise in plunger:** Ø 40 mm

**weight:** ca. 550 kg

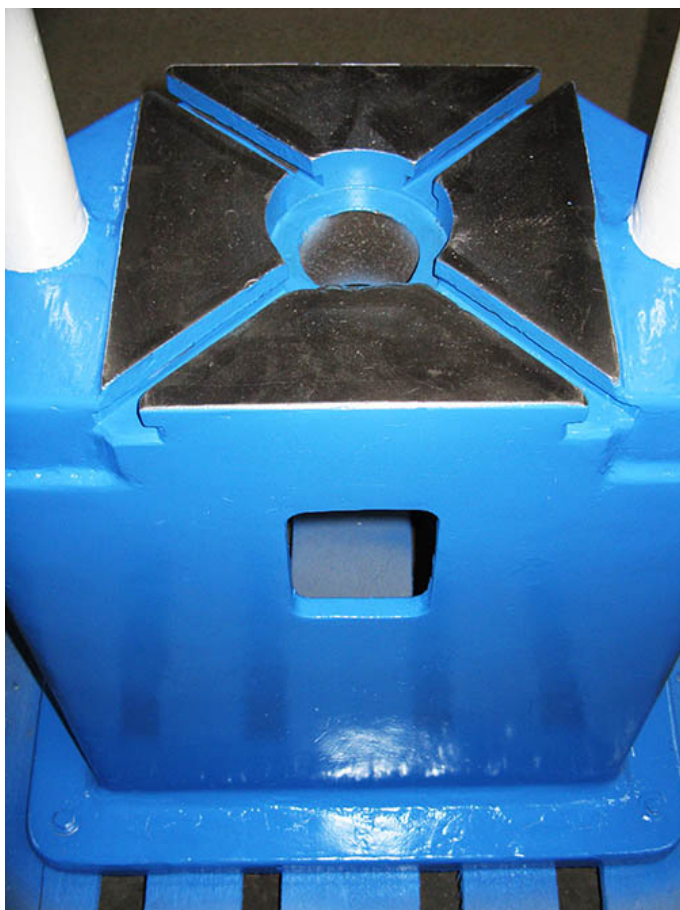
**standing area:** W 0,65 x D 0,45 x H 1,50 m

**color:** blue/ grey / white

## Features

- the machine has a spindle fixing device
- If the year of construction is marked “\*”, it is the information the prior owner relayed to us or our own estimation.





All prices will have an additional 19 % tax added (German "Mehrwertsteuer/Mwst.") on your invoice. Buyers from foreign countries will pay the net price without an additional tax, if they provide us with their Ident.-Nr.

All prices are ex-works, without packaging or delivery. The machine will be loaded on a truck free of charge, provided you pick it up at our warehouse. Packaging is done only after the buyer has signed a sales contract. The buyer bears the cost of packaging and delivery.

#### **Attention – Important!!!**

If you want us to facilitate the shipping with an external contractor, this will be done on behalf of and paid for by the buyer. We are not responsible for transport or unloading damage. By buying from us, you automatically agree to these terms and conditions.

All information and technical data on this website is non-binding, errors excepted. All sales are subject to our Terms and Conditions.

#### **ProHa-Maschinen**

Owner: Wilfried Jürgens

Ident-Nr. DE 182722273

AG Essen HRA 7402

#### **Office**

EGGE 3  
45549 Sprockhövel

#### **Warehouse**

58285 Gevelsberg

Collection and delivery by  
appointment only.

Phone 0 23 39 / 121212

Fax 0 23 39 / 121213

[www.proha-maschinen.de](http://www.proha-maschinen.de)  
[info@proha-maschinen.de](mailto:info@proha-maschinen.de)