



**ATTENTION – SPECIAL OFFERS NOW AVAILABLE !!!
SO PRICES ARE CURRENTLY REDUCED BY 20% !!!**

Offer

Precision Profile- & Surface Grinding Machine Jung HF 50 R with autom. depth adjustment



manufacturer: Jung
type: HF 50 R
mach.-Nr.: 5048
year of construction: ??? / 09.2018 tüp.
comm.-Nr.: 3990800/009
stock-nr.: 1901

Special Price: 7.850,- € | now 6.280,- €

Technical Data

(According to manufacturer)

grinding length: 600 mm

grinding width: 200 mm

table clamping surface: 600 x 200 mm

vertical feed

hydraulic, infinitely adjustable: 1 – 24 m / min.

hand wheel, 1 revolution moves table by: 110 mm

cross feed

hand wheel, 1 revolution moves table by: 4,0 mm

hand wheel with adjustable scale-ring and vernier, division: 0,02 mm

fine-cross feed, division: 0,01 mm

optical adjustment readable: 0,005 mm

automatic, infinitely adjustable: 0,1 – 1,8 mm

grinding wheel height adjustment

hand wheel, 1 revolution moves grinding wheel by: 0,2 mm

hand wheel, division: 0,002 mm

fine adjustment, adjustable from: 0,001 mm – unlimited

tipp-adjustment, adjustable from: 0,001 – 0,01 mm

aut. depth adjustment, adjustable: 0,001 – 0,01 mm

rapid adjustment via electric motor: rapid traverse

grinding wheel

revolutions: 1.000 – 4.000 rpm, infinitely adjustable

grinding wheel dimensions surface grinding: 225 x 25 x 51 mm

grinding wheel dimensions profile grinding: 225 x 25 x 51 mm

drive power: 5,5 kW

weight: ca. 1.450 kg

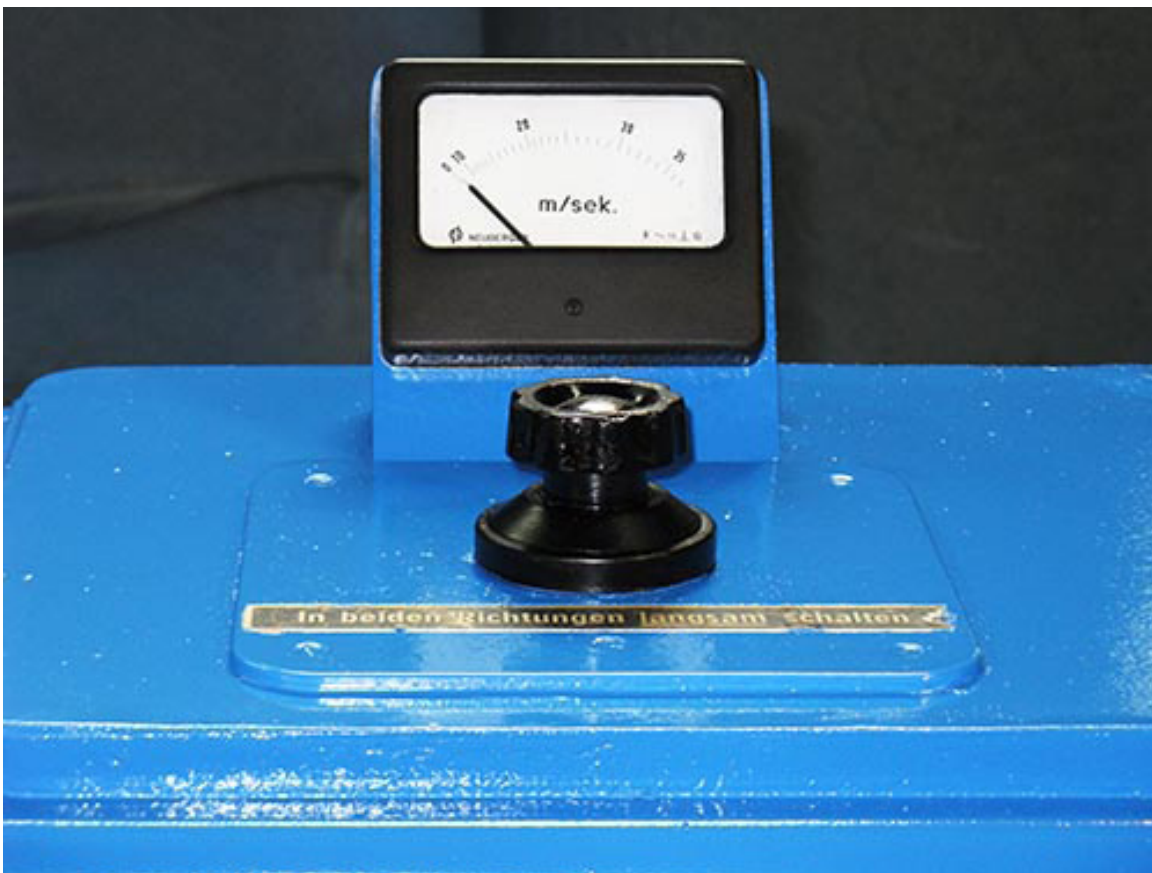
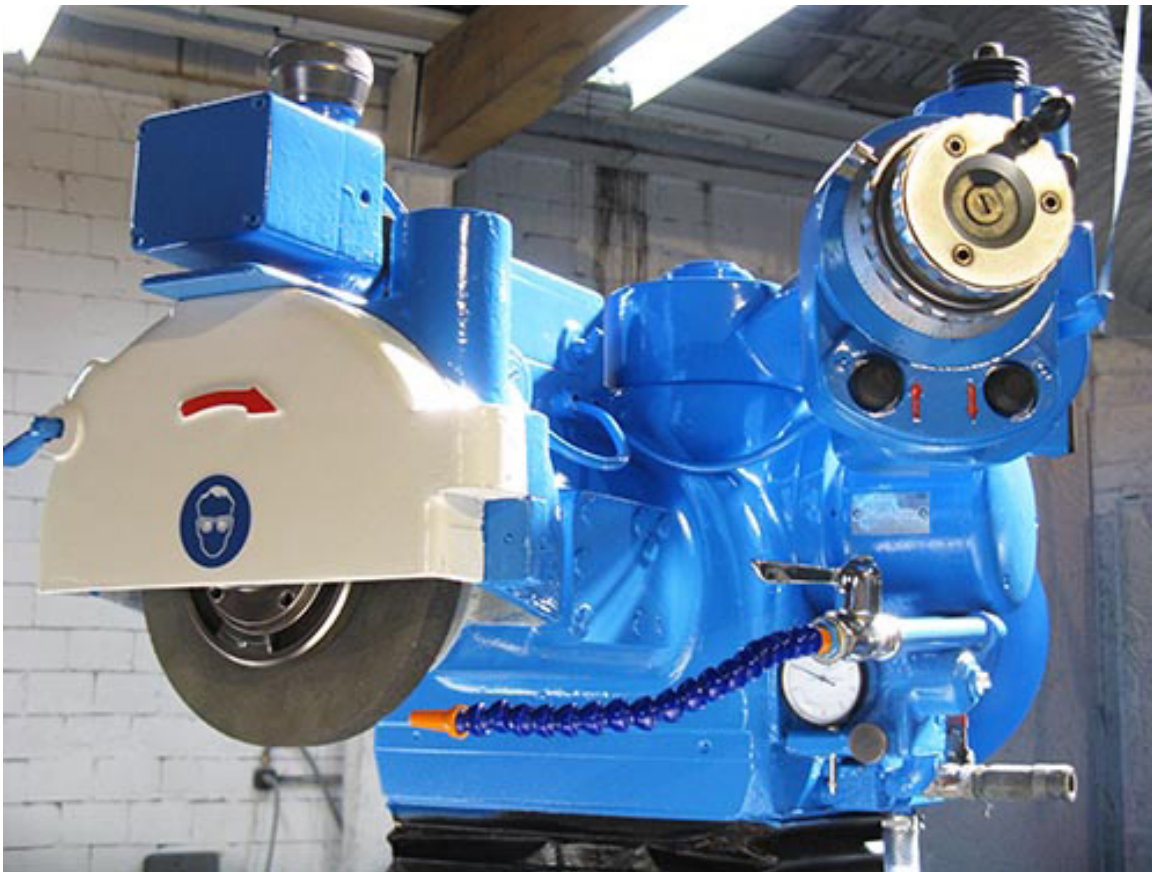
standing area: W 1,70 x D 1,20 x H 1,70 m

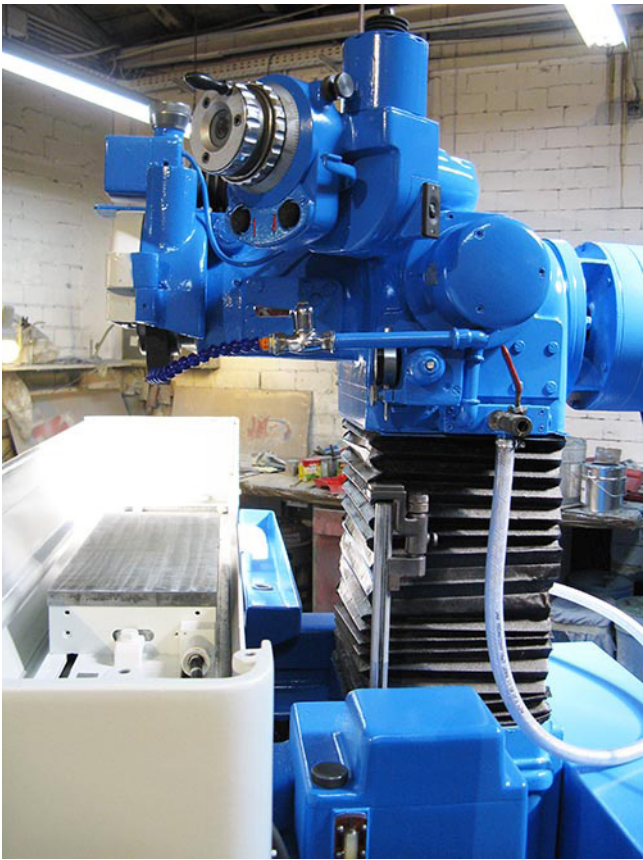
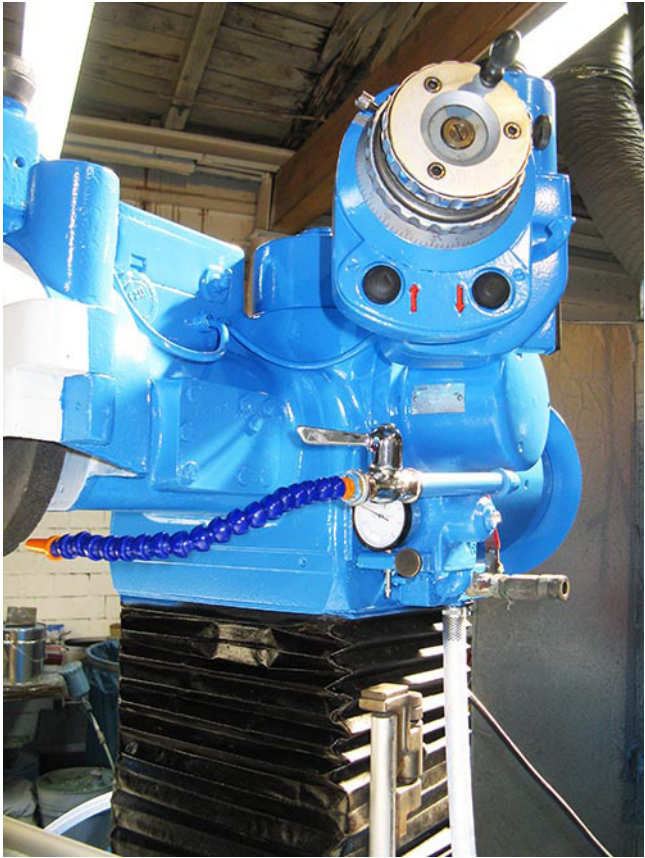
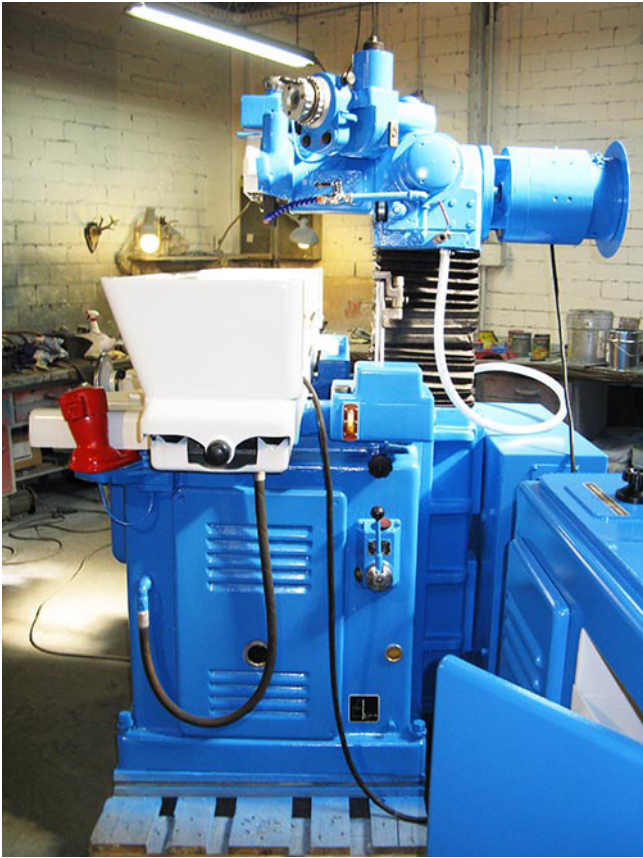
color: blue / grey-white

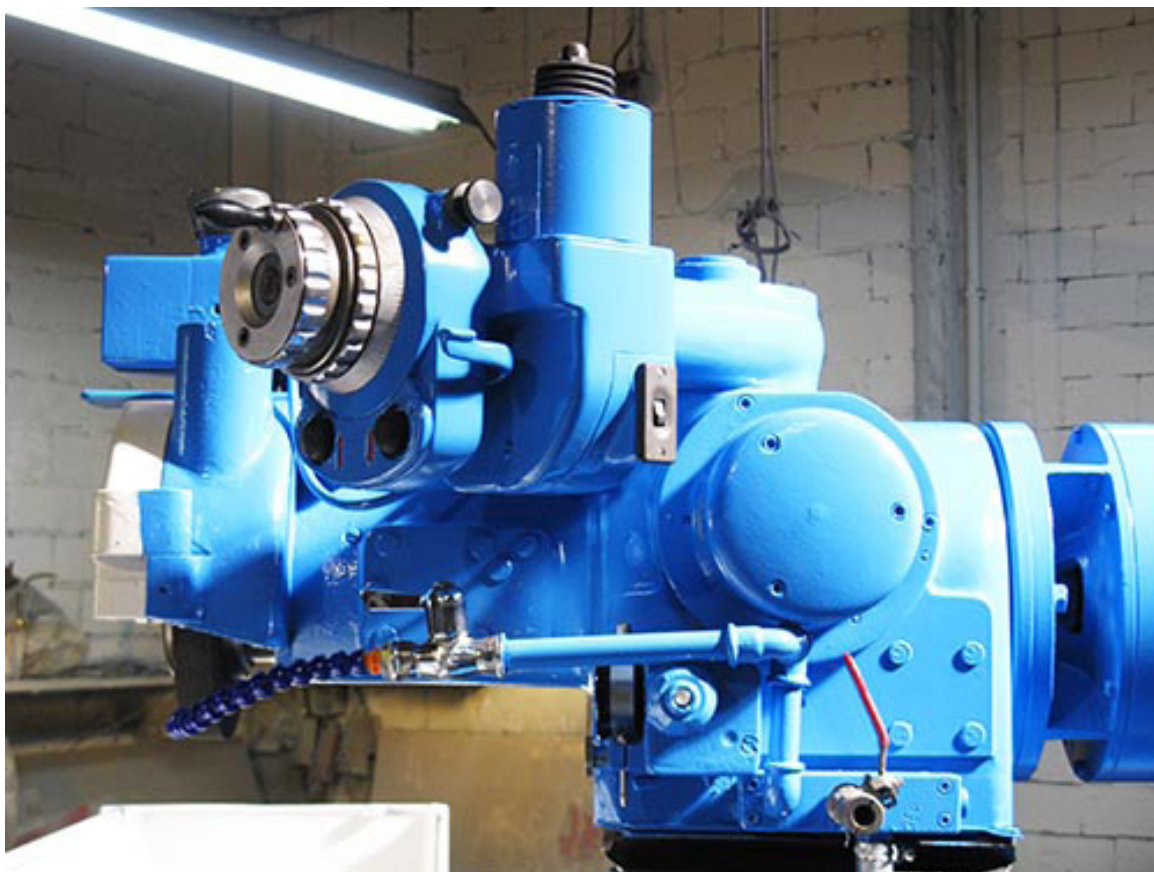
Features

- autom. depth adjustment with nonius bar and measuring clock 0,001 mm
 - tipp-adjustment 0,001 mm for the vertical fine adjustment
 - optical adjustment with projection for fine-adjustment with glass scale
 - infinitely adjustable control actuator for grinding wheel
 - rapid traverse for height adjustment
 - additional fine adjustment for cross feed
 - clamping device for the diagonal grinding sled, for plunge grinding
 - electr. magnetic clamp plate 500 x 200 mm
 - 2 electrical helper magnets = HM 20 = 200 x 75 x 75
 - grinding wheel honing device with honing diamond
 - grinding wheel flanges with wheel
 - wet grinding installation
 - additional water connector with hose and pistol for cleaning of magnetic plate
 - adjustable splash guards
 - central lubrication for the gliding trusses
 - user manual for Jung HF 50 R
 - circuit plan for Jung HF 50 R
 - lubrication plan for Jung HF 50 R
 - 4 machine feet, adjustable in height
-
- If the year of construction has a "tüb."-date, that means the machine has been electrically and technically inspected by us on that date.
 - If the year of construction has a "tüb."-date, that means the machine has been partially overhauled on that date according to the prior owner.
 - If the year of construction is marked "*", it is the information the prior owner relayed to us or our own estimation.









ProHa-Maschinen

Owner: Wilfried Jürgens

Ident-Nr. DE 182722273

AG Essen HRA 7402

Office

Egge 3
45549 Sprockhövel

Warehouse

58285 Gevelsberg

Collection and delivery by
appointment only.

Phone 0 23 39 / 121212

Fax 0 23 39 / 121213

www.proha-maschinen.de
info@proha-maschinen.de