

Offer

Horiz. Threading machine Wagner WB – Z 27



manufacturer: Wagner
type: WB – Z 27
mach.-nr.: 18274
year of construction: ???
comm.-nr.: 3999375/009
stock-nr.: 1903

Special Price: 2.650,- €

Technical Data

(According to manufacturer)

cutting area: M6 – M 27 | R 1/8" – R 1" | W 1/4" – W 1"

10 spindle speeds: 68,5 – 168 U / min.

slide travel: 380 mm

drive power: 2,5 kW

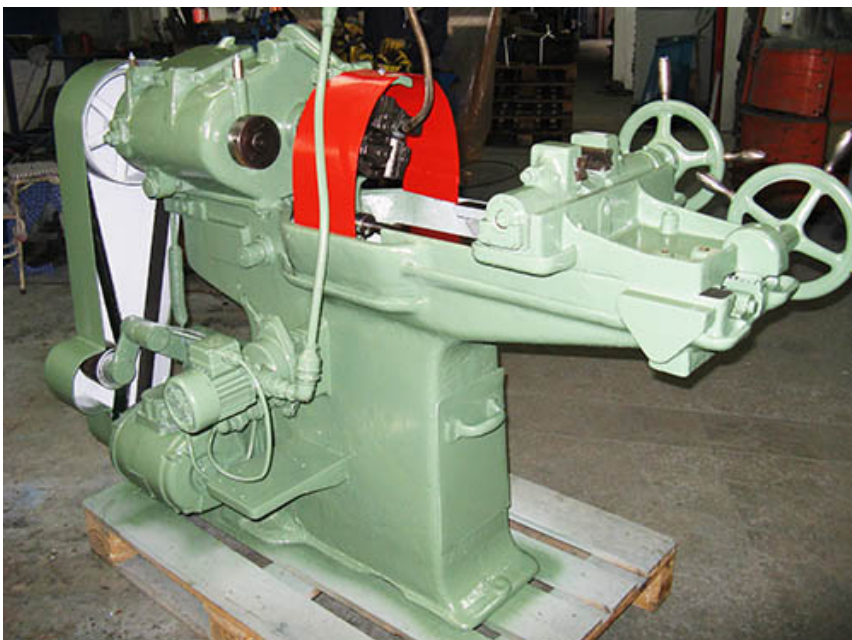
weight: ca. 450 kg

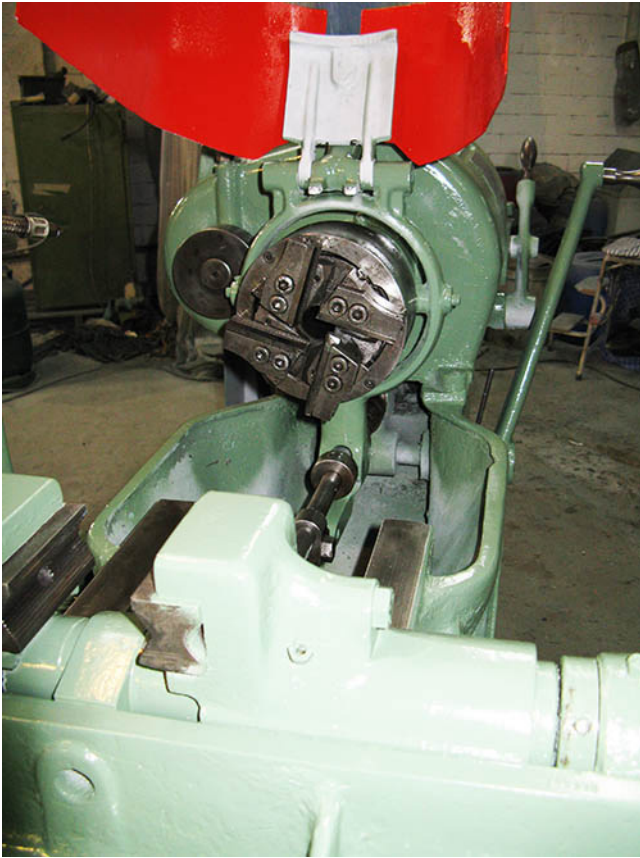
standing area: W 1,40 x D 0,80 x H 1,10 m

color: green RAL 6011

Features

- thread-cutting head Wagner Z 27, self-opening
 - 3 sets of chaser die holders,
 - Set 1 = M 7 – M18 oder 1/4" – 5/16"
 - Set 2 = M16 – M27 oder 5/8" – 1"
 - Set 3 = R 3/4" – 1"
 - various chasers sets
 - cooling system
 - splinter shoot
 - operating manual for Wagner head Z 27
-
- If the year of construction is marked "*", it is the information the prior owner relayed to us or our own estimation.





All prices will have an additional 19 % tax added (German "Mehrwertsteuer/Mwst.") on your invoice. Buyers from foreign countries will pay the net price without an additional tax, if they provide us with their Ident.-Nr.

All prices are ex-works, without packaging or delivery. The machine will be loaded on a truck free of charge, provided you pick it up at our warehouse.

The buyer bears the cost of packaging and delivery. Packaging is done only after the buyer has signed a sales contract.

Attention – Important!!!

If you want us to facilitate the shipping with an external contractor, this will be done on behalf of and paid for by the buyer. We are not responsible for transport or unloading damage. By buying from us, you automatically agree to these terms and conditions.

All information and technical data on this website is non-binding, errors excepted. All sales are subject to our Terms and Conditions.

ProHa-Maschinen

Owner: Wilfried Jürgens

Ident-Nr. DE 182722273

AG Essen HRA 7402

Office

EGGE 3
45549 Sprockhövel

Warehouse

58285 Gevelsberg

Collection and delivery by
appointment only.

Phone 0 23 39 / 121212

Fax 0 23 39 / 121213

www.proha-maschinen.de

info@proha-maschinen.de