



Attention!!!

Our prices are still drastically reduced !!!

Offer

Horiz. Surface Grinding Machine Elbe-Werke Samson SWH6



manufacturer: Elbe-Werke

type: Samson SWH6

mach.-nr.: 15313

comm.-nr.: 0500/381/227/1108

stock-nr.: 1912

Special Price: 3.480,- €

Technical Data

(According to manufacturer)

table clamping surface: 600 x 200 mm
gr. grinding length: 600 mm
gr. grinding width: 200 mm
table speed: infinitely adjustable up to 15 m / min.

gr. grinding wheel- Ø : 200 mm
gr. grinding wheel width: 30 mm

drive power: 1,6 kW
weight: ca. 1.100 kg
standing area: W 1,70 x D 1,20 x H 1,70 m

Features

- automatic cross feed, one mark 0,1 mm
- fine adjustment: one mark 0,005 mm
- electric lifting and lowering
- fine adjustments by hand = 0,01 mm
- grinding wheel honing device
- lange with grinding wheel
- magnetic clamp plate 350 x 150 mm, Nr. 34569, pivot- and adjustable up to 90°
- wet grinding installation with dust remover
- central lubrication
- 4 machine feet, adjustable
- manual Elbe-Werke, with el. circuit plan

According to the seller, this machine was used as a teaching tool in the shop of VW, with inventory number 2328 (see pictures)

- If the year of construction is marked “**”, it is the information the prior owner relayed to us or our own estimation.

All prices will have an additional 19 % tax added (German “Mehrwertsteuer/Mwst.”) on your invoice. Buyers from foreign countries will pay the net price without an additional tax, if they provide us with their Ident.-Nr.

All prices are ex-works, without packaging or delivery. The machine will be loaded on a truck free of charge, provided you pick it up at our warehouse.

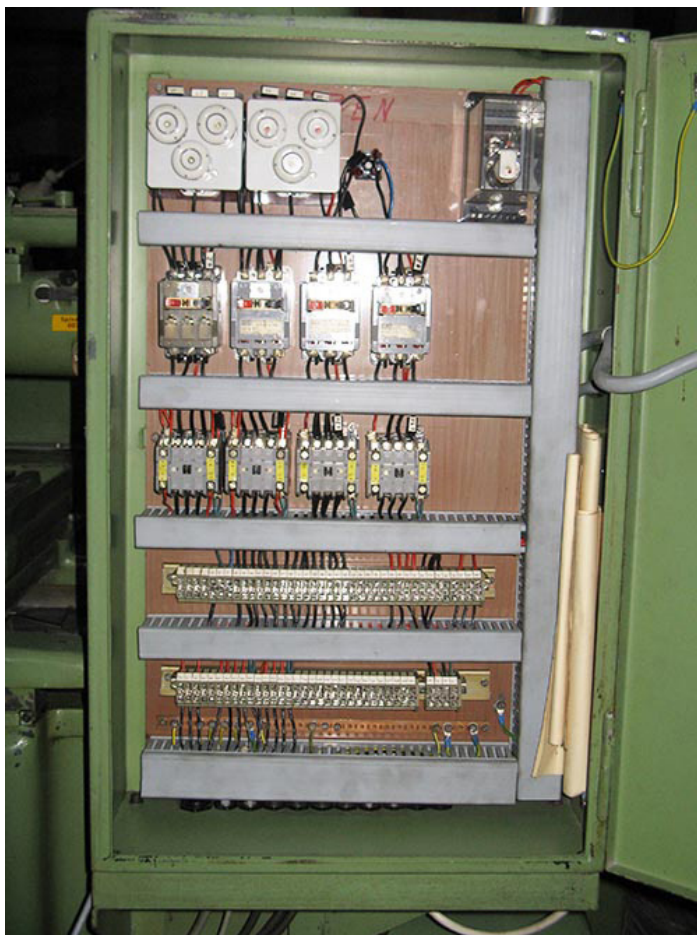
The buyer bears the cost of packaging and delivery. Packaging is done only after the buyer has signed a sales contract.

Attention – Important!!!

If you want us to facilitate the shipping with an external contractor, this will be done on behalf of and paid for by the buyer. We are not responsible for transport or unloading damage. By buying from us, you automatically agree to these terms and conditions.

All information and technical data on this website is non-binding, errors excepted. All sales are subject to our Terms and Conditions, which you can find here (German only).





ProHa-Maschinen
 Owner: Wilfried Jürgens
 Ident-Nr. DE 182722273
 AG Essen HRA 7402

Office
 Egge 3
 45549 Sprockhövel

Warehouse
 58285 Gevelsberg

Collection and delivery by
 appointment only.

Phone 0 23 39 / 121212
 Fax 0 23 39 / 121213

www.proha-maschinen.de
info@proha-maschinen.de