



ATTENTION - PRICE DROP!!!

Prices are rising, ours are falling!!!

Our prices are reduced by 50% now,
due to warehouse restructuring!!!

Offer

Horiz. Surface Grinding Machine



manufacturer: JUNG

type: G 60

mach.-Nr.: 14508

comm.-Nr.: 0400/090/270/0760

stock-Nr.: 1913

Regular Price: 2.850,- € > **Reduced Price: 1.425,- € BN**

Technical Data

(According to manufacturer)

table clamping surface: 600 x 200 mm
max. grinding length: 600 mm
max. grinding width: 200 mm
table speed: infinitely adjustable up to 15 m / min.

max. grinding wheel – Ø : 200 mm
max. grinding wheel width: 30 mm

drive power: 1,6 kW
weight: ca. 1.100 kg
standing area: W 1,60 x D 1,30 x H 1,80 m

Features

- automatic cross feed
 - hydr. table adjustment, infinitely adjustable
 - fine adjustments by hand = 0,01 / 0,005 mm
 - grinding wheel honing device
 - flange with grinding wheel
 - magnetic clamp plate Jung, 500 x 200 mm
 - dust removal device attached to machine
 - central lubrication
 - 4 machine feet, adjustable
 - Betriebsanleitung JUNG G60
-
- If the year of construction is marked “**”, it is the information the prior owner relayed to us or our own estimation.

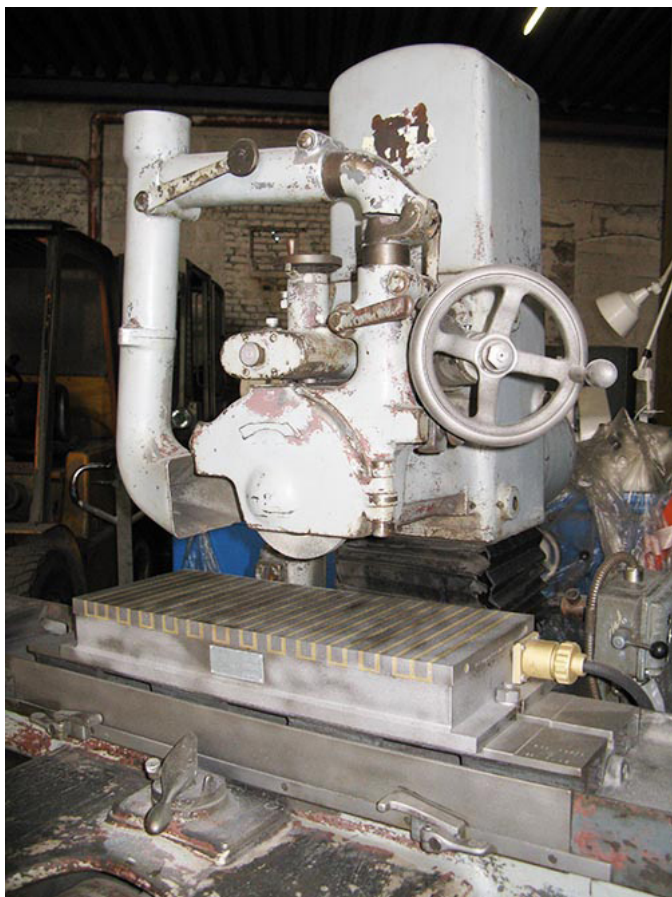
All prices will have an additional 19 % tax added (German “Mehrwertsteuer/Mwst.”) on your invoice. Buyers from foreign countries will pay the net price without an additional tax, if they provide us with their Ident.-Nr.

All prices are ex-works, without packaging or delivery. The machine will be loaded on a truck free of charge, provided you pick it up at our warehouse. Packaging is done only after the buyer has signed a sales contract. The buyer bears the cost of packaging and delivery.

Attention – Important!!!

If you want us to facilitate the shipping with an external contractor, this will be done on behalf of and paid for by the buyer. We are not responsible for transport or unloading damage. By buying from us, you automatically agree to these terms and conditions.

All information and technical data on this website is non-binding, errors excepted. All sales are subject to our Terms and Conditions.



ProHa-Maschinen

Owner: Wilfried Jürgens

Ident-Nr. DE 182722273

AG Essen HRA 7402

Office

Egge 3
45549 Sprockhövel

Warehouse

58285 Gevelsberg

Collection and delivery by
appointment only.

Phone 0 23 39 / 121212

Fax 0 23 39 / 121213

www.proha-maschinen.de
info@proha-maschinen.de