



**Attention!!!**

**Our prices are still drastically reduced !!!**

## Offer

### Hydr. Hacksaw Kasto EBS 450 U



manufacturer: Kasto

type: EBS 450 U

mach.-Nr.: 1480711440/42609

comm.-Nr.: 0201/171/265/0637

stock-Nr.: 1930

**Special Price: 3.450,- €**

## Technical Data

(According to manufacturer)

**sawing area:** diameter 450 mm or 425 x 350 mm

**saw blade dimensions:** 700 x 50 x 2,0 mm

**4 hub speeds:** 40 / 57 / 80 / 115 hubs/min.

**drive power:** 4,5 kW

**weight:** ca. 840 kg

**standing area:** L 1,80 x W 0,70 x H 1,20 m

## Features

- 4 Hubgeschwindigkeiten4 hub speeds
  - cutting pressure infinitely adjustable
  - pre-mounted plate guideway for saw bow
  - dust-proof transmission
  - accelerated return stroke of saw bow
  - closed hydraulic system
  - liquid cooling system
  - automatic lifting of saw bow
  - mitre up to 45°
  - adjustable material stop
  - reverse clamping device to cut small leftover pieces
  - new sawblade
- 
- If the year of construction is marked “\*\*”, it is the information the prior owner relayed to us or our own estimation.

All prices will have an additional 19 % tax added (German “Mehrwertsteuer/Mwst.”) on your invoice. Buyers from foreign countries will pay the net price without an additional tax, if they provide us with their Ident.-Nr.

All prices are ex-works, without packaging or delivery. The machine will be loaded on a truck free of charge, provided you pick it up at our warehouse.

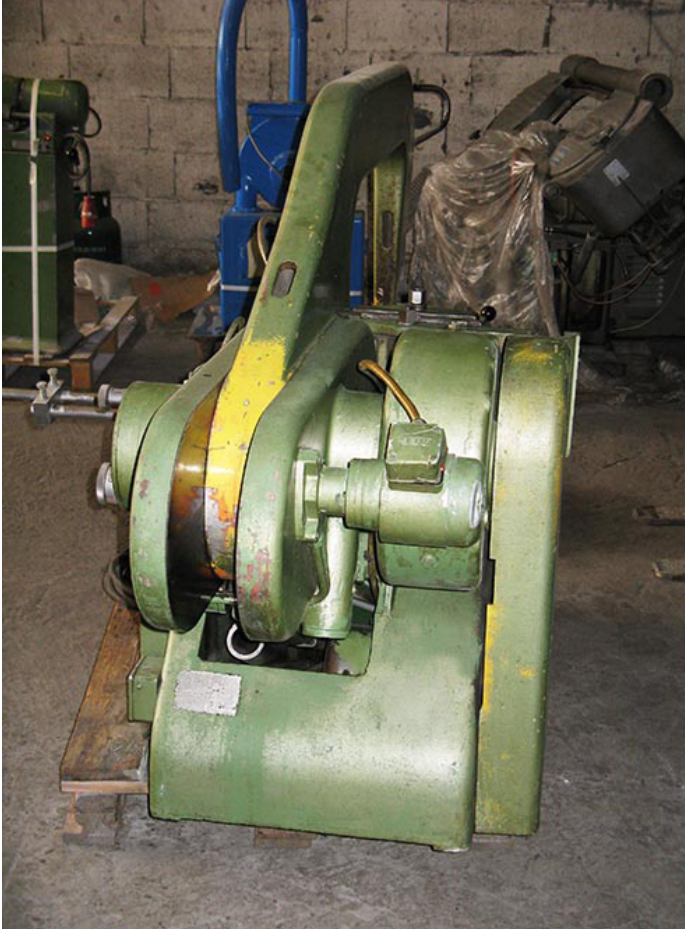
The buyer bears the cost of packaging and delivery. Packaging is done only after the buyer has signed a sales contract.

### Attention – Important!!!

If you want us to facilitate the shipping with an external contractor, this will be done on behalf of and paid for by the buyer. We are not responsible for transport or unloading damage. By buying from us, you automatically agree to these terms and conditions.

All information and technical data on this website is non-binding, errors excepted. All sales are subject to our Terms and Conditions, which you can find here (German only).





**ProHa-Maschinen**  
Owner: Wilfried Jürgens  
  
Ident-Nr. DE 182722273  
AG Essen HRA 7402

**Office**  
Egge 3  
45549 Sprockhövel

**Warehouse**  
58285 Gevelsberg

Collection and delivery by  
appointment only.

Phone 0 23 39 / 121212  
Fax 0 23 39 / 121213

[www.proha-maschinen.de](http://www.proha-maschinen.de)  
[info@proha-maschinen.de](mailto:info@proha-maschinen.de)