



**Attention!!!**

**Prices are rising, ours are falling!!!**

**Our prices are reduced by 30% now!!!**

## Offer

### Universal Cylindrical Grinding Machine MSO FFM-U 130/1000



manufacturer: MSO  
type: FFM-U 130/1000  
mach.-Nr.: 16219Mv12438  
year of construction: ???  
comm.-Nr.: 3990505/009  
stock-nr.: 1841

The machine can be used for:

outer grinding  
surface grinding  
cone grinding

**Reduced Special Price: 3.325,- €**

# Technical Data

(According to manufacturer)

**centre height:** 130 mm  
**swing-Ø:** 260 mm  
**grinding length:** 1000 mm  
**between centres:** 1050 mm

## grinding wheel

**diameter:** 300 mm  
**bore-Ø:** 127 mm  
**largest width of grinding wheel for plunge grinding:** 40 mm  
**largest total width of a grinding wheel set:** 80 mm  
**largest sum of single widths:** 40 mm  
**grinding wheel speed:** 1.650 / 2.150 rpm = 30 m/s

## grinding head

**adjustment of grinding head:** 90°  
**largest grinding head hub:** 255 mm  
**largest hub by hand wheel:** 90 mm  
**additional hub:** 142 mm  
**autom. interval feed:** 0,005 – 0,020 mm  
**feed by one revolution of hand wheel:** 1,0 / 2,0 mm  
**feed by one hand wheel graduation mark:** 0,0025 mm  
**setting by tip-switch regarding diameter:** 0,00125 / 0,0025 mm

## headstock spindle

**6 work-piece speeds, adjustable:** 40 – 305 rpm  
**rotatability of headstock spindle against the grinding wheel:** 90°  
**spindle cone or inner taper of headstock spindle:** MK 5

## tailstock

**inner cone of quill:** MK 3  
**quill travel:** 30 mm

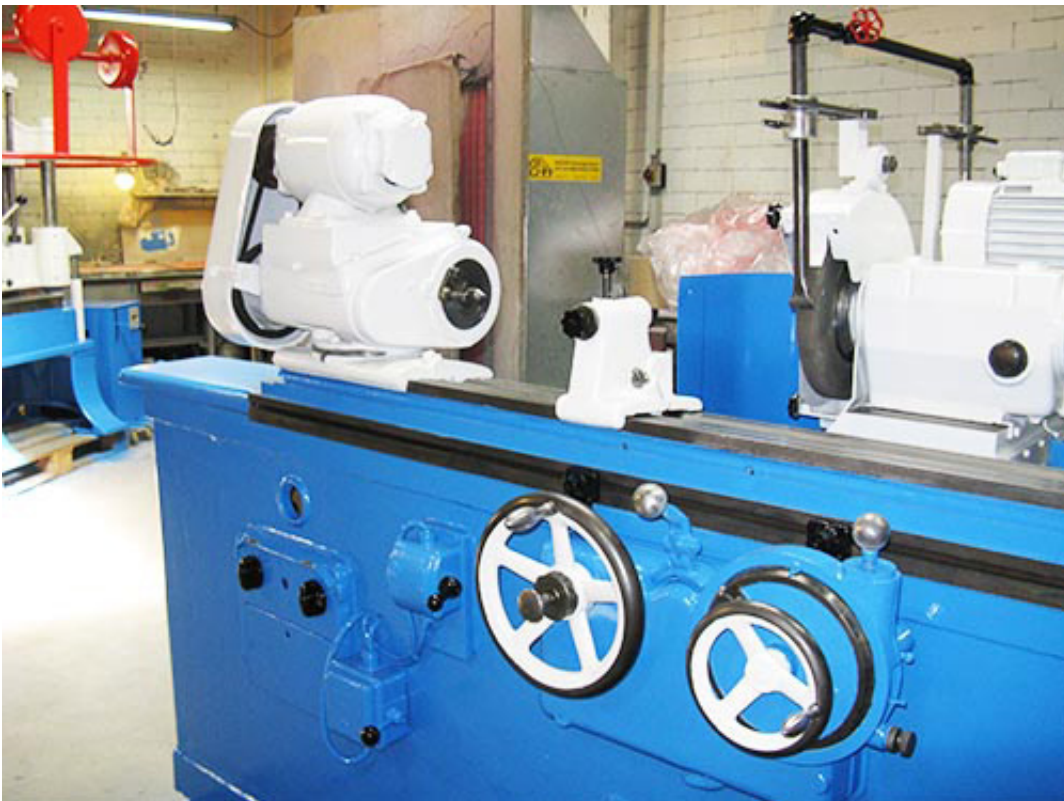
## table

**largest table incline:** 7°  
**largest cone angle:** 14°  
**table speed:** 0,2 – 1,1 m/min  
**rough travel by hand wheel:** 1 revolution 25 mm, 1 graduation mark 0,25 mm  
**fine travel by hand wheel:** 1 revolution 2,5 mm, 1 graduation mark 0,025 mm

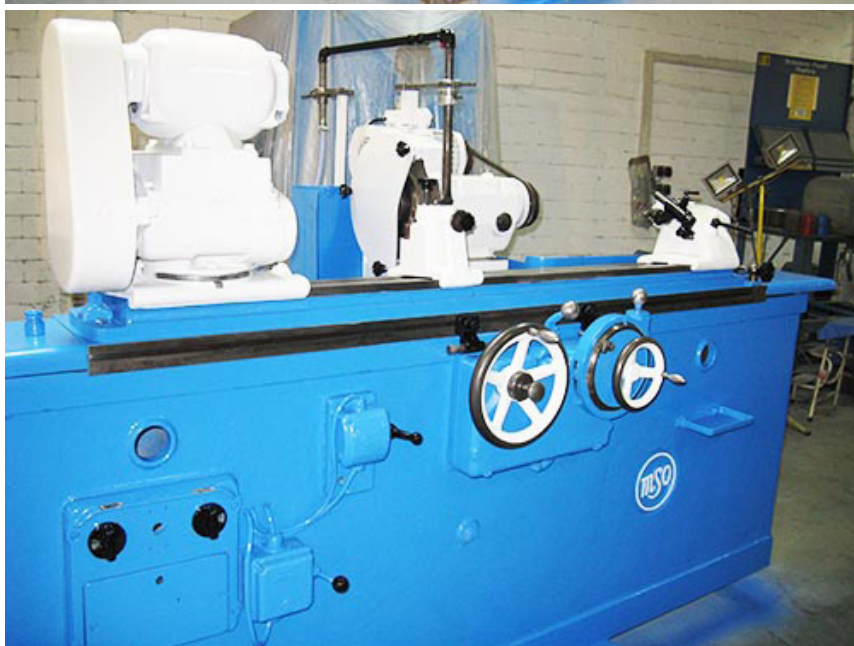
**total connected load:** ca. 4,5 kW  
**weight:** ca. 2.100 kg  
**standing area:** W 2,70 x D 1,20 x H 1,50 m  
**color:** blue / grey-white / red

## Features

- manual or automatic operation
  - self-feeding up to 0-limit
  - grinding wheel fine adjustment 0,00125 / 0,0025
  - automatic feed works as piercing feed, without feed, table-dependant feed only RIGHT / LEFT and RIGHT / only LEFT
  - upper table for tamper grinding with fine feed
  - bedway is lubricated by re-oil
  - tailstock can be activated by mechanical lever
  - attachment with measuring clock for table pivoting up to 10°
  - headstock spindle pivotable up to 90°
  - grinding head pivotable up to 360°, in 2 layers
  - grinding head two speeds
  - free-standing liquid cooling system
  - splash guards
  - grinding wheel flange with wheel
  - open bezel, adjustable
  - center punch tips
  - measuring clock holder for table tilting
  - adjustable dressing device for grinding wheel
  - polished alignment shaft for lengthwise sledge
  - operating manual
- 
- If the year of construction is marked “\*\*”, it is the information the prior owner relayed to us or our own estimation.







All prices will have an additional 19 % tax added (German "Mehrwertsteuer/Mwst.") on your invoice. Buyers from foreign countries will pay the net price without an additional tax, if they provide us with their Ident.-Nr.

All prices are ex-works, without packaging or delivery. The machine will be loaded on a truck free of charge, provided you pick it up at our warehouse.

The buyer bears the cost of packaging and delivery. Packaging is done only after the buyer has signed a sales contract.

**Attention – Important!!!**

If you want us to facilitate the shipping with an external contractor, this will be done on behalf of and paid for by the buyer. We are not responsible for transport or unloading damage. By buying from us, you automatically agree to these terms and conditions.

All information and technical data on this website is non-binding, errors excepted. All sales are subject to our Terms and Conditions.

#### **ProHa-Maschinen**

Owner: Wilfried Jürgens

Ident-Nr. DE 182722273

AG Essen HRA 7402

#### **Office**

EGGE 3  
45549 Sprockhövel

#### **Warehouse**

58285 Gevelsberg

Collection and delivery by  
appointment only.

Phone 0 23 39 / 121212

Fax 0 23 39 / 121213

[www.proha-maschinen.de](http://www.proha-maschinen.de)  
[info@proha-maschinen.de](mailto:info@proha-maschinen.de)