



ATTENTION – SPECIAL OFFER UNTIL 30.06.2017
WE NEED ROOM FOR WAREHOUSE INSULATION
SO PRICES ARE NOW REDUCED BY 35%

Offer

Plate shears

Stückmann & Hillen 15.20/6



manufacturer: Stückmann & Hillen

type: 15.20/6

year of construction: ??? / 2016 tüp.

comm.-nr.: 3990650/009

stock-nr.: 1680

Special Price: 4.950,- € | now 3.217,50 € net

Technical Data

plate width: 1.520 mm

plate strength: 6 mm

back limiter: ca. 600 mm adjustable, hand wheels with scale

table height: ca. 980 mm

working power: 5 kW

weight: ca. 3.000 kg

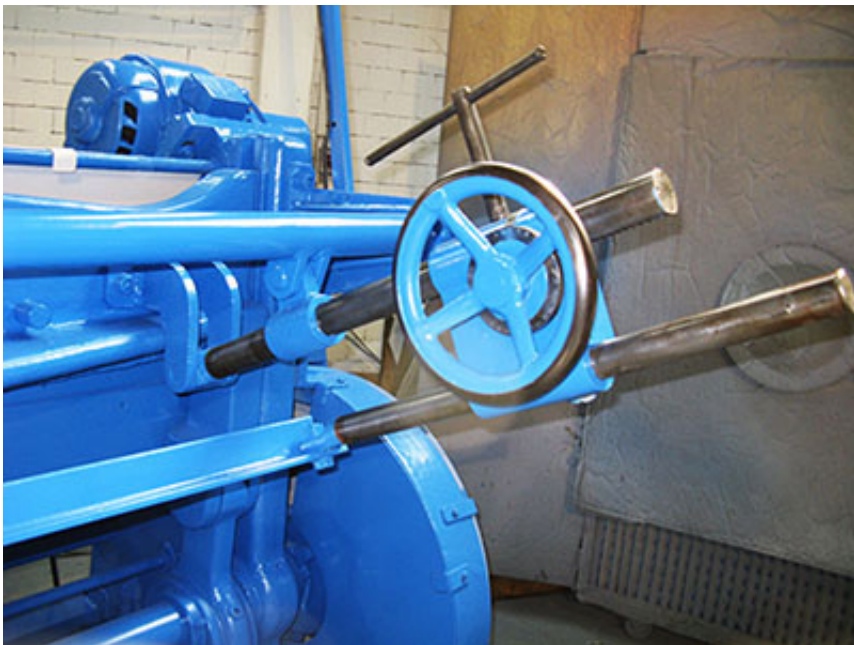
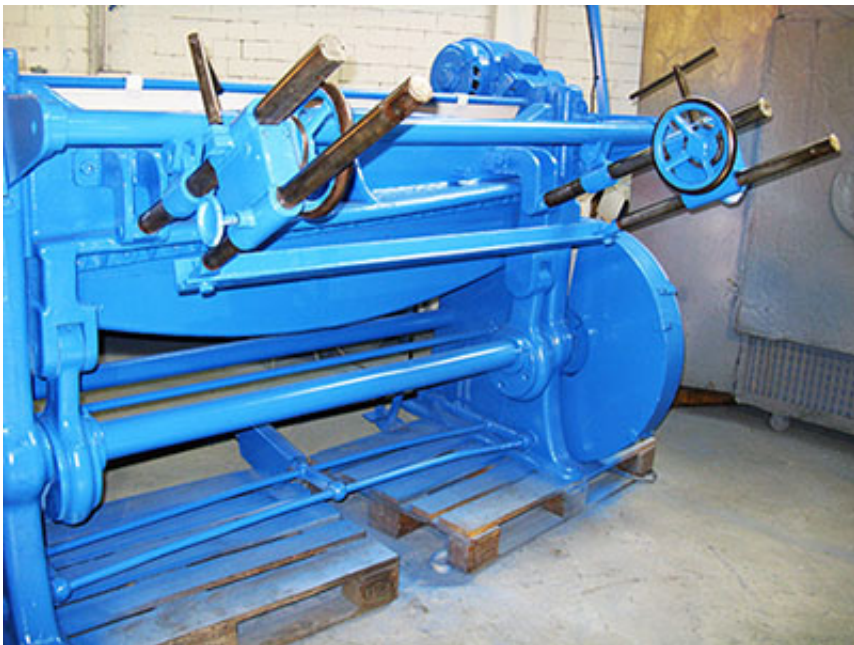
standing area: W 2,50 x D 2,50 x H 1,60 m (dimensions for all, without machine lamp)

machine color: blue / greywhite

Features

- 1 front-side limiter with measuring block 1.250 mm
 - 2 front lay-on arms
 - adjustable back limiter ca. 600 mm
 - foot pedal
 - single hub / constant hub
 - machine lamp Neon 1,50 m
-
- If the year of construction has a "tüb."-date, that means the machine has been electrically and technically inspected by us on that date.
 - If the year of construction has a "tüb."-date, that means the machine has been partially overhauled on that date according to the prior owner.
 - If the year of construction is marked "*", it is the information the prior owner relayed to us or our own estimation.







ProHa-Maschinen

Owner: Wilfried Jürgens

Ident-Nr. DE 182722273

AG Essen HRA 7402

Office

EGGE 3
45549 Sprockhövel

Warehouse

58285 Gevelsberg

Collection and delivery by
appointment only.

Phone 0 23 39 / 121212

Fax 0 23 39 / 121213

www.proha-maschinen.de
info@proha-maschinen.de