



**ATTENTION – SPECIAL OFFERS NOW AVAILABLE !!!**

**OUR PRICES ARE HITTING THE SUMMER LOW !!!**

**SO PRICES ARE CURRENTLY REDUCED BY 35% !!!**

## Offer

### Horiz. Surface Grinding Machine WMW FA1



**manufacturer:** WMW – Berlin

**type:** FA1 – 200 x 600

**mach.-nr.:** FA11451452

**year of construction:** ??? / 2017 tüp.

**comm.-Nr.:** 3990500/009

**stock-nr.:** 1869

**Special Price: ~~4.100,- €~~ | now 2.665,- €**

## Technical Data

(According to manufacturer)

**table clamping surface:** 600 x 200 mm

**max. grinding length:** 600 mm

**max. grinding width:** 200 mm

**table speed:** infinitely adjustable up to 15 m / min.

**Largest distance between table surface and grinding spindle center:** 350 mm

**max. grinding wheel – Ø:** 200 mm

**max. grinding wheel width:** 30 mm

**drive power:** 2,1 kW

**weight:** ca. 1.150 kg

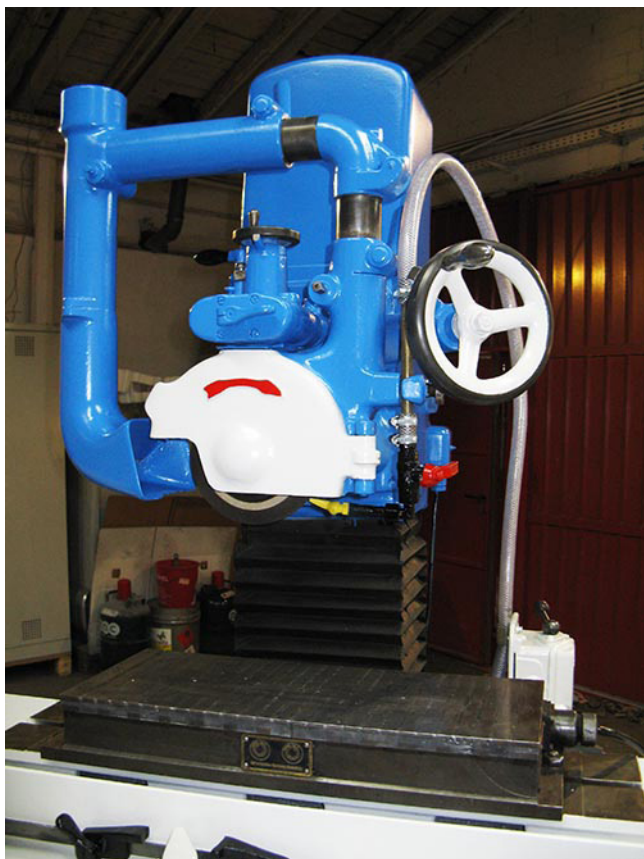
**standing area:** W 2,00 x D 1,20 x H 2,00 m

**color:** grey-white/ blue

## Features

- automatic cross feed: 0,12 – 1,8 mm
  - hydr. table adjustment, infinitely adjustable
  - fine adjustments by hand = 0,01 / 0,005 mm
  - grinding wheel honing device
  - flange with grinding wheel
  - magnetic clamp plate 500 x 200 mm
  - wet grinding installation
- 
- If the year of construction has a “tüb.”-date, that means the machine has been electrically and technically inspected by us on that date.
  - If the year of construction has a “tüb.”-date, that means the machine has been partially overhauled on that date according to the prior owner.
  - If the year of construction is marked “\*”, it is the information the prior owner relayed to us or our own estimation.





**ProHa-Maschinen**  
Owner: Wilfried Jürgens  
  
Ident-Nr. DE 182722273  
AG Essen HRA 7402

**Office**  
Egge 3  
45549 Sprockhövel

**Warehouse**  
58285 Gevelsberg

Collection and delivery by  
appointment only.

Phone 0 23 39 / 121212  
Fax 0 23 39 / 121213

[www.proha-maschinen.de](http://www.proha-maschinen.de)  
[info@proha-maschinen.de](mailto:info@proha-maschinen.de)